

NINE-PATCH QUILT

Big Kids: 9" blocks set 5 across, 7 down
 (18 pieced blocks, 17 plain blocks)
 Fabric: 1 yard dark, 2¼" light for blocks
 Borders (4½"), half yard; binding half yard.

Little Kids: 6" blocks set 7 across, 10 down
 (35 pieced blocks, 35 plain blocks)
 Fabric: 1 yard dark, 2 yards light for blocks
 No borders....half yard for binding

BIG KIDS:

Cut 3½" strips, 8 dark, 7 light

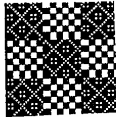
Make 3 sets like this, and then cut into 3½" sections -- make 36 of them.



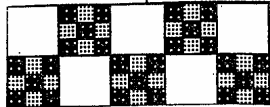
Make 2 sets like this, and then cut into 3½" sections -- make 18 of them.



Sew those sections into 9-patch blocks.
 Make 18 blocks.



Alternate the 9-patch blocks with 17 plain blocks cut 9½" square -- set 5 x 7.



ROTARY CUT?

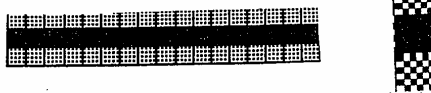
LITTLE KIDS:

Cut 2½" strips, 13 dark, 11 light

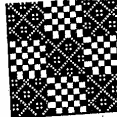
Make 5 sets like this, and then cut into 2½" sections -- make 70 of them.



Make 3 sets like this, and then cut into 2½" sections -- make 35 of them.



Sew those sections into 9-patch blocks.
 Make 35 blocks.



Alternate the 9-patch blocks with 35 plain blocks cut 6½" square -- set 7 x 10.

