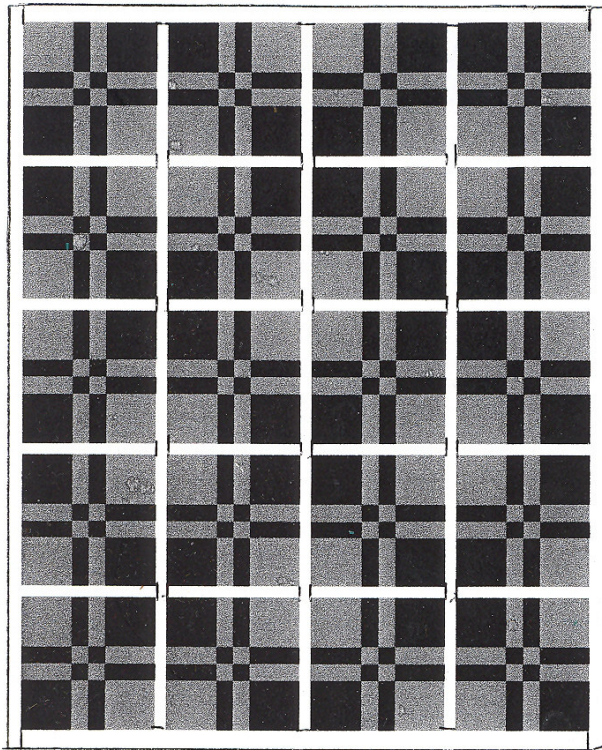


Square Deal



If blocks are 12" and lattice is 1",
quilt will measure 53" x 66"

Fabrics will be called "light", "dark"
and "lattice".

Cut 40 dark 5" squares

Cut 40 light 5" squares

Cut 80 dark 2" x 5" rectangles

Cut 80 light 2" x 5" rectangles

Cut 40 dark 2" squares

Cut 40 light 2" squares

Lattices are 1½" (will finish to 1")


Cut 6 1½" strips across fabric width and
then cut into 16 1½" x 12½" strips for
horizontals

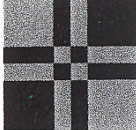
Also cut 12 1½" strips across fabric;
these will be pieced to make the verticals

Sew the dark and light 2" squares into 20 4-patches. 

Sew the dark and light rectangles into bars as shown— 

Then make 20 sections of bars-4Patch-bars as shown — 

Make 40 sections of 5" dark square-bars-5" light squares — 

Sew into 20 blocks. 

Add horizontal lattices to connect 5 blocks for a row, making 4 rows; watch color placement because you'll want the darks and lights to join as shown in the quilt diagram.

Connect the rows with the vertical lattices, and finally add a lattice to the top, bottom and sides of the quilt. (If you prefer to leave the outer lattice off, quilt will be 51" x 64".)

Please be sure to include a backing and binding when you give us your finished top.

Yardage: 1 ¾ yard each of "dark" and "light fabrics: 1 ¼ yard for lattices and bindings;

Back: 3 yards — or you can piece it from leftover fabrics from the quilt top.